

Phoenix 5000

NIR Analyzer



Results in 30 seconds for:

- Moisture
- Fat
- Protein
- Ash
- Fiber
- and more

Next Generation NIR Analyzer

- Monitor incoming ingredients
- Optimize your production
- Test the quality of final product
- Transfer your existing databases
- Ideal for at-line and in the lab
- Rapid ROI
- Flexible data handling
- User friendly software design
- IP62 rated
- Little to no sample prep

The new Phoenix 5000 NIR Analyzer is the ideal solution for manufacturers and labs that need rapid, accurate and reliable analysis.

The Phoenix 5000 employs a scanning monochromator, which is the NIR technology most trusted by agriculture and food companies and labs around the world.

It can simultaneously test for moisture protein, fat, fiber, starch, sugar, ash and more.

For customers who have already developed databases on other NIR platforms (FOSS™, Unity Scientific™, etc.), databases can easily be transferred onto the Phoenix 5000 and reliable results can be generated immediately.

EASY AS 1-2-3

Simply fill the sample cup, place it in the tray and press scan on the software.

The Phoenix 5000 will automatically scan the entire surface of the sample cup and provide results in 30 seconds or less.

Your results can be immediately viewed in the software or transmitted via shared drive, LIMS or PLC.

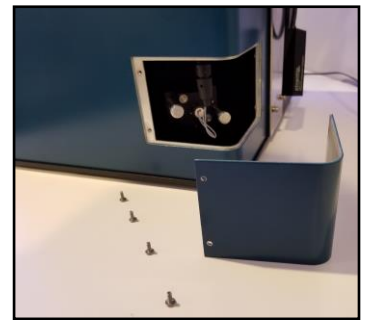
Innovative Sample Car

More than 85% of the sample area is scanned yielding more reliable and repeatable results



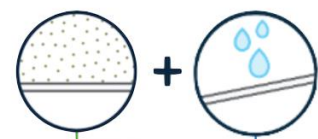
Easy to Access Lamp

The lamp can be replaced in under 5 minutes



Fits large and small sample cups

Ideal for both solid and liquid samples



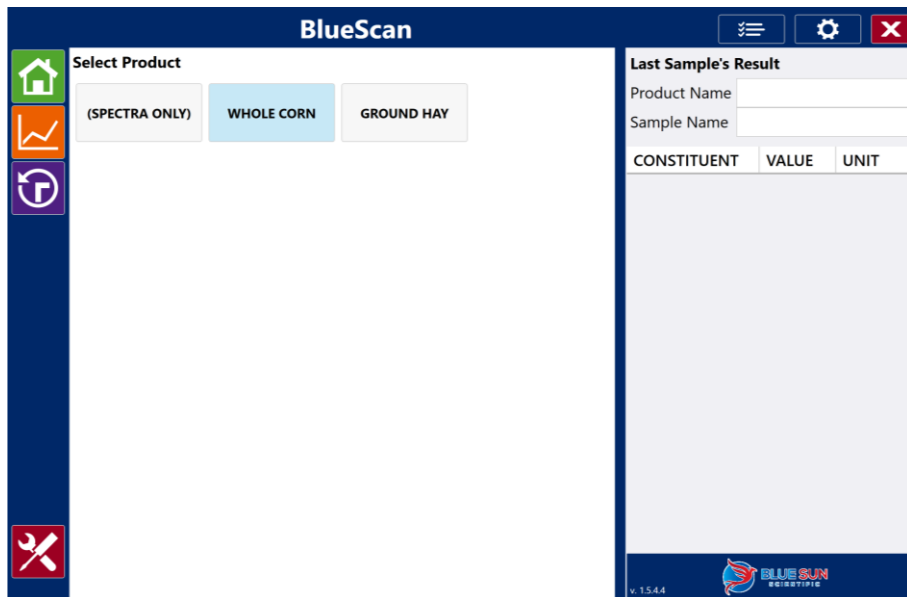
IP 6 2

Waterdrops

Dust proof

Introducing BlueScan

Software so simple, anyone can use it



The Phoenix 5000 is powered by BlueScan. BlueScan is designed to simplify routine analysis and is packed with features making it ideal for monitoring quality and optimizing production.

BlueScan's tab design ensures your information is just a click away. You can easily view results, historical data, spectra, generate reports and run diagnostics with the press of a button.

Keep Your Database

The Phoenix 5000 NIR Analyzer comes standard with calibrations for many industries.

If you have existing calibrations that you have built and would like to keep, you can with the Phoenix 5000.

The Phoenix 5000 is backwards compatible with databases from many major NIR manufacturers, including FOSS™, and Unity Scientific™.

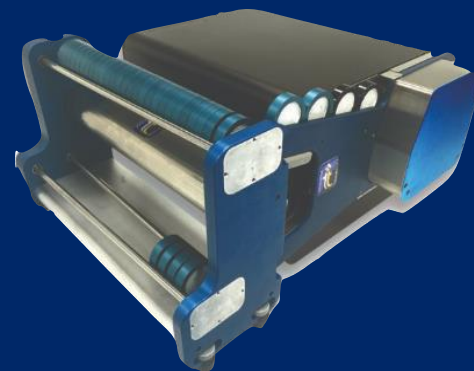


All Phoenix 5000 Analyzers are manufactured at our company headquarters in Jessup, Maryland.

Integrated Diagnostics

To ensure reliability and minimize downtime, the Phoenix 5000 comes with check standards integrated into the instrument.

Auto-Sampler



The Phoenix 5000 is also available in a side loading configuration. The side loading Phoenix 5000 can be configured with a 5, 30 or 50 position auto-sampler.

Specifications

Part Number	BLU-5000-TL
Wavelength Range	1100-2500 nm
Wavelength Selection	Scanning diffraction grating monochromator with nominal bandwidth of 10nm (FWHH). Configurable Data presented in 1nm or 2nm increments
Temperature and Humidity	35 – 105 °F (1 – 40 °C) < 85%
IP Rating	IP 62
Lamp Life	(Continuous Operation): 10,000 Hrs. (MTBF)
Power Requirements:	V~100-240, 50/60 Hz 2 A 250V, 2A
Dimensions:	14.0 in x 15.0 in x 20.75 in (LxWxH) ; 34 lbs

Blue Sun Guarantee

The Blue Sun Guarantee is the industry's leading service and warranty program. It guarantees you start up quickly and avoid downtime and repairs. Every Blue Sun instrument comes standard with the Blue Sun Guarantee, which includes:



- Free phone support
- Guaranteed Installation
- 1 Year Calibration Support and Development
- 1 Year Warranty on Parts